

# Fuego Magno Compact

## Chimney Stove



### Technical details:

Nominal heating capacity:	5 kW
Power range:	3 - 7 kW
Efficiency:	> 80 %
Weight: with steel cladding	207 kg
Accessory: Fuego PowerBloc!	60 kg

### Description:

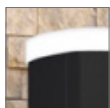
Like its smaller brother the Fuego Compact, the Fuego Magno Compact also invites you to sit back and dream.

The PowerBloc! with its storage mass ensures pleasant, long-lasting warmth even if the chimney stove is no longer being heated.

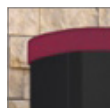
### Variations:



Cerami  
caffè  
melange  
(accessory)



Ceramic  
schnee-  
weiß  
(accessory)



Ceramic  
weichsel  
(accessory)



Serpentin  
natural  
stone



Steel black

### Special Functions:



Ambient  
air-inde-  
pendent  
combustion



Swirl  
combustion  
chamber



Ventilated  
door handle

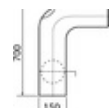
### Accessory:



OEC



Olsberg  
Powersystem



Universal  
accessories

Search for trader: