

# Turia Compact

## Chimney Stove



### Technical Details:

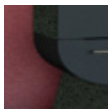
Nominal heating capacity:	5 kW
Power range:	3 - 7 kW
Efficiency:	> 80 %
Weight:	
with steel cladding	190 kg
with ceramic cladding	202 kg
with natural stone cladding	224 kg

### Description:

Is there anything nicer than seeing out the day in the comforting warmth of a blazing fire?

Treat yourself to something really special and choose a Turia Compact.

### Variations:



Ceramic ebony



Ceramic schnee-weiss



Serpentin natural stone

### Special Functions:



Ambient air-independent combustion



Swirl combustion chamber

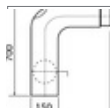


Ventilated door handle

### Accessory:



OEC



Universal accessories

Search for trader: